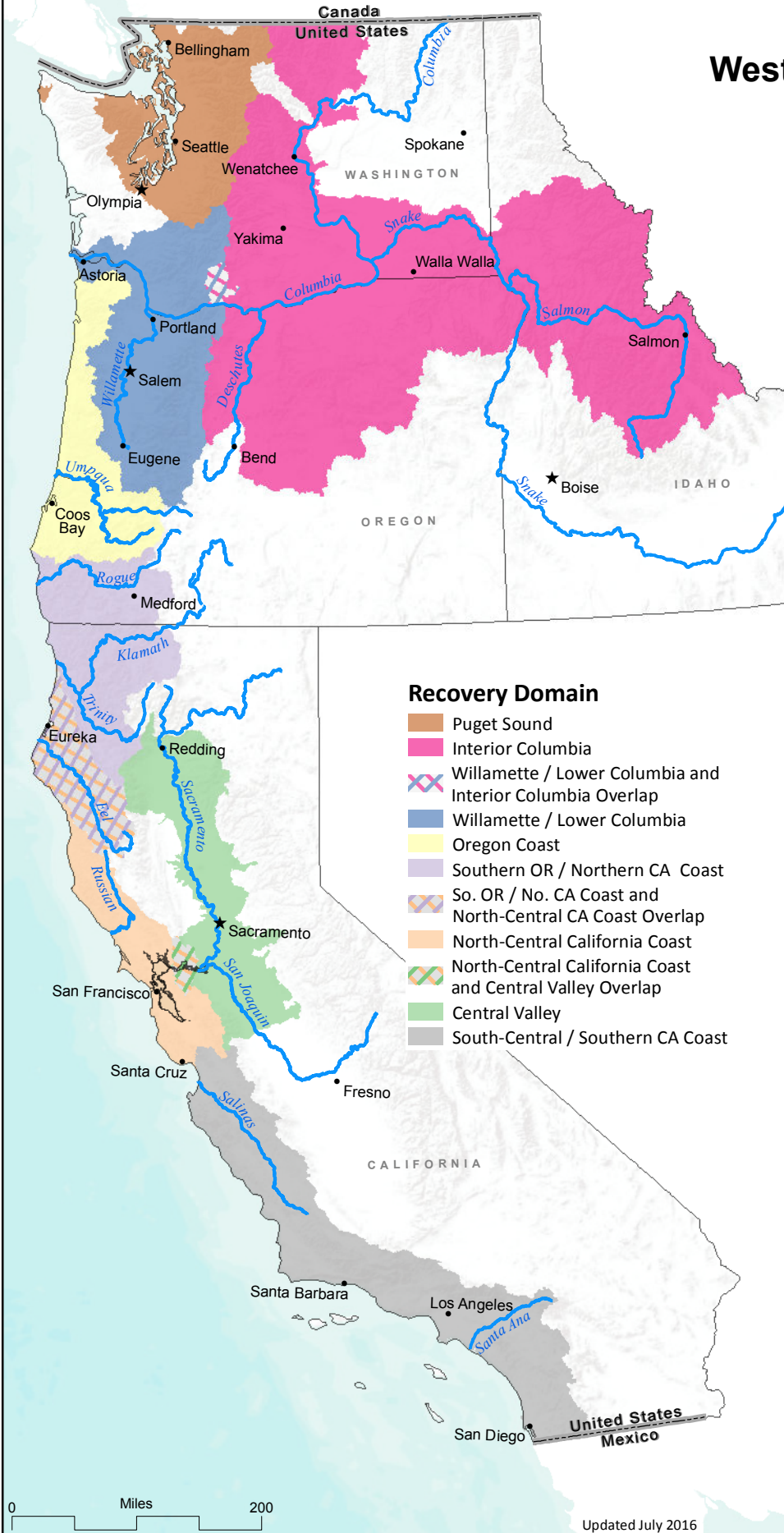


Status of ESA Listings & Critical Habitat Designations for West Coast Salmon & Steelhead



- Recovery Domain**
- Puget Sound
 - Interior Columbia
 - Willamette / Lower Columbia and Interior Columbia Overlap
 - Willamette / Lower Columbia
 - Oregon Coast
 - Southern OR / Northern CA Coast
 - So. OR / No. CA Coast and North-Central CA Coast Overlap
 - North-Central California Coast
 - North-Central California Coast and Central Valley Overlap
 - Central Valley
 - South-Central / Southern CA Coast

Evolutionarily Significant Unit / Distinct Population Segment	ESA Status	Date of ESA Listing	Date of CH Designation
Puget Sound Recovery Domain			
Hood Canal Summer-run Chum Salmon	T	3/25/1999	9/2/2005
Ozette Lake Sockeye Salmon	T	3/25/1999	9/2/2005
Puget Sound Chinook Salmon	T	3/24/1999	9/2/2005
Puget Sound Steelhead	T	5/11/2007	2/24/2016

Interior Columbia Recovery Domain			
Middle Columbia River Steelhead	T	3/25/1999 1/5/2006	9/2/2005
Snake River Fall-run Chinook Salmon	T	4/22/1992	12/28/1993
Snake River Spring / Summer-run Chinook Salmon	T	4/22/1992	10/25/1999
Sockeye Salmon	E	11/20/1991	12/28/1993
Snake River Steelhead	T	8/18/1997 1/5/2006	9/2/2005
Upper Columbia River Spring-run Chinook Salmon	E	3/24/1999	9/2/2005
Upper Columbia River Steelhead	T	8/18/1997 1/5/2006	9/2/2005

Willamette / Lower Columbia Recovery Domain			
Columbia River Chum Salmon	T	3/25/1999	9/2/2005
Lower Columbia River Chinook Salmon	T	3/24/1999	9/2/2005
Lower Columbia River Coho Salmon	T	6/28/2005	2/24/2016
Lower Columbia River Steelhead	T	3/19/1998 1/5/2006	9/2/2005
Upper Willamette River Chinook Salmon	T	3/24/1999	9/2/2005
Upper Willamette River Steelhead	T	3/25/1999 1/5/2006	9/2/2005

Oregon Coast Recovery Domain			
Oregon Coast Coho Salmon	T	2/11/2008	2/11/2008

Southern Oregon / Northern California Coast Recovery Domain			
Southern OR / Northern CA Coasts Coho Salmon	T	5/6/1997	5/5/1999

North-Central California Coast Recovery Domain			
California Coastal Chinook Salmon	T	9/16/1999	9/2/2005
Central California Coast Coho Salmon	E	10/31/1996 (T) 6/28/2005 (E) 4/2/2012 (RE)	5/5/1999
Central California Coast Steelhead	T	8/18/1997 1/5/2006	9/2/2005
Northern California Steelhead	T	6/7/2000 1/5/2006	9/2/2005

Central Valley Recovery Domain			
California Central Valley Steelhead	T	3/19/1998 1/5/2006	9/2/2005
Central Valley Spring-run Chinook Salmon	T	9/16/1999	9/2/2005
Sacramento River Winter-run Chinook Salmon	E	11/5/1990 (T) 1/4/1994 (E)	6/16/1993

South-Central / Southern California Coast Recovery Domain			
South-Central California Coast Steelhead	T	8/18/1997 1/5/2006	9/2/2005
Southern California Steelhead	E	8/18/1997 5/1/2002 (RE) 1/5/2006	9/2/2005

ESA = Endangered Species Act, CH = Critical Habitat, RE = Range Extension
E = Endangered, T = Threatened

Critical Habitat Rules Cited

- 2/24/2016 (81 FR 9252) Final Critical Habitat Designation for Puget Sound Steelhead and Lower Columbia River Coho Salmon
- 2/11/2008 (73 FR 7816) Final Critical Habitat Designation for Oregon Coast Coho Salmon
- 9/2/2005 (70 FR 52630) Final Critical Habitat Designation for 12 ESU's of Salmon and Steelhead in WA, OR, and ID
- 9/2/2005 (70 FR 52488) Final Critical Habitat Designation for 7 ESU's of Salmon and Steelhead in CA
- 10/25/1999 (64 FR 57399) Revised Critical Habitat Designation for Snake River Spring/Summer-run Chinook Salmon
- 5/5/1999 (64 FR 24049) Final Critical Habitat Designation for Central CA Coast and Southern OR/Northern CA Coast Coho Salmon
- 12/28/1993 (58 FR 68543) Final Critical Habitat Designation for Snake River Chinook and Sockeye Salmon
- 6/16/1993 (58 FR 33212) Final Critical Habitat Designation for Sacramento River Winter-run Chinook Salmon

ESA Listing Rules Cited

- 4/2/2012 (77 FR 19552) Final Range Extension for Endangered Central California Coast Coho Salmon
- 2/11/2008 (73 FR 7816) Final ESA Listing for Oregon Coast Coho Salmon
- 5/11/2007 (72 FR 26722) Final ESA Listing for Puget Sound Steelhead
- 1/5/2006 (71 FR 5248) Final Listing Determinations for 10 Distinct Population Segments of West Coast Steelhead
- 6/28/2005 (70 FR 37160) Final ESA Listing for 16 ESU's of West Coast Salmon
- 5/1/2002 (67 FR 21586) Range Extension for Endangered Steelhead in Southern California
- 6/7/2000 (65 FR 36074) Final ESA Listing for Northern California Steelhead
- 9/16/1999 (64 FR 50394) Final ESA Listing for Two Chinook Salmon ESUs in California
- 3/25/1999 (64 FR 14508) Final ESA Listing for Hood River Canal Summer-run and Columbia River Chum Salmon
- 3/25/1999 (64 FR 14517) Final ESA Listing for Middle Columbia River and Upper Willamette River Steelhead
- 3/25/1999 (64 FR 14528) Final ESA Listing for Ozette Lake Sockeye Salmon
- 3/24/1999 (64 FR 14308) Final ESA Listing for 4 ESU's of Chinook Salmon
- 3/19/1998 (63 FR 13347) Final ESA Listing for Lower Columbia River and Central Valley Steelhead
- 8/18/1997 (62 FR 43937) Final ESA Listing for 5 ESU's of Steelhead
- 5/6/1997 (62 FR 24588) Final ESA Listing for Southern Oregon / Northern California Coast Coho Salmon
- 10/31/1996 (61 FR 56138) Final ESA Listing for Central California Coast Coho Salmon
- 1/4/1994 (59 FR 222) Final ESA Listing for Sacramento River Winter-run Chinook Salmon
- 4/22/1992 (57 FR 14653) Final ESA Listing for Snake River Spring/summer-run and Snake River Fall Chinook Salmon
- 11/20/1991 (56 FR 58619) Final ESA Listing for Snake River Sockeye Salmon
- 11/5/1990 (55 FR 46515) Final ESA Listing for Sacramento River Winter-run Chinook Salmon