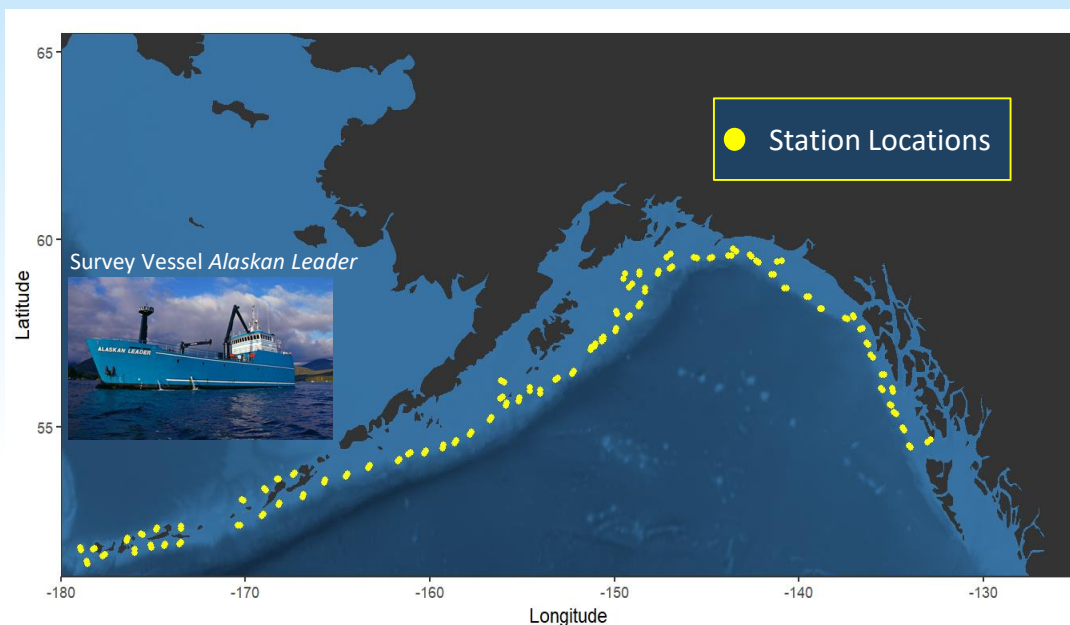




## Alaska Fisheries Science Center Longline Survey

June 1 – August 28, 2024



Map showing station locations in the Aleutian Islands and Gulf of Alaska of the 2024 AFSC Longline Survey. The survey samples groundfish populations in depths from 150-1000 m along the continental shelf and upper slope.

### Who is conducting the research?

This project is supported by NOAA Fisheries through the Alaska Fisheries Science Center (AFSC) and the Cooperative Research Program. The Cooperative Research Program provides financial support and the AFSC provides scientists to oversee the collection and analyses of survey data and contracts with an industry vessel (FV *Alaskan Leader*) to execute this 3-month groundfish survey. The survey utilizes a cost-recovery model, whereby the catch is sold by the vessel contractor to offset operational expenses, including crew wages, fuel, and fixed vessel costs.

### What is the research objective?

The overall research objective is to conduct a fisheries-independent survey of groundfish resources throughout Alaskan waters. The AFSC Longline Survey is specifically designed to provide a relative population index for assessing sablefish, or black cod, but its data is also useful for several other groundfish species. The survey occurs in habitats that are not well sampled by trawl surveys due to the deep depths and rough bottoms where the gear is deployed.

### Where is the research being conducted?

The AFSC Longline Survey is conducted throughout Alaska. The survey samples in the Gulf of Alaska every year and alternates every other year between the eastern Bering Sea (odd-numbered years) and the eastern Aleutian Islands (even-numbered years).

### Why is the data important? How will data be used?

The data collected by the survey is a primary index used in the Alaska sablefish stock assessment. The data is also used to assess other groundfish species, including Greenland turbot, Pacific cod, shortspine thornyhead, rockfish (including roughey, blackspotted, and shortraker rockfish), sharks, and grenadiers. The stock assessments determine population estimates and trends and ultimately are used for producing harvest recommendations presented to the North Pacific Fisheries Management Council (NPFMC) for setting annual fishery quotas.

## Schedule for the 2024 AFSC Longline Survey

Leg 1 (Aleutians), Dutch Harbor to Dutch Harbor	June 1 – June 15
Leg 2 (Western GOA), Dutch Harbor to Ketchikan	June 15 – July 3
Leg 3 (Southeastern GOA), Ketchikan to Yakutat	July 3 – July 20
Leg 4 (Northeastern GOA), Yakutat to Cordova	July 20 – August 4
Leg 5 (Central GOA), Cordova to Kodiak	August 4 – August 16
Leg 6 (Central GOA) Kodiak to Dutch Harbor	August 16 – August 28
Survey data analysis	August 28 – September
Stock assessments presented to NPFMC	November
Survey data available online and via cruise report	December

### How will this research benefit Alaska communities and stakeholders?

The AFSC Longline Survey supports responsible management of Alaska groundfish stocks. Alaska communities and stakeholders benefit from lucrative sustainable fisheries and continued access to high-quality seafood for subsistence and personal use.

### How do you plan to communicate research results?

Data from the survey will be provided to stock assessment scientists in September and stock assessments will be presented to the NPFMC in November. Raw survey data will be made available to the general public online (see below) and via a cruise report that will be available as an AFSC Technical Memorandum in December.

### Longline survey data:

<https://www.fisheries.noaa.gov/resource/map/alaska-longline-survey-data-map>

### Longline survey cruise reports:

<https://www.fisheries.noaa.gov/alaska/science-data/alaska-sablefish-longline-survey-reports>



**Gina Raimondo**  
Secretary of Commerce

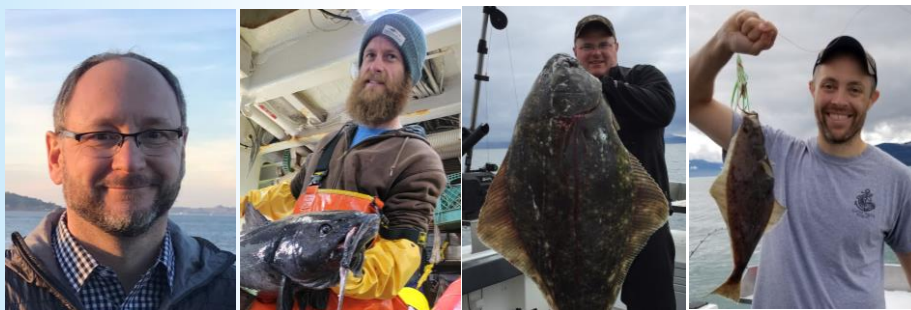
**Richard W. Spinrad**  
Under Secretary of Commerce for  
Oceans and Atmosphere

**Janet Coit**  
Assistant Administrator  
for Fisheries

**December 2024**

[www.fisheries.noaa.gov](http://www.fisheries.noaa.gov)

**Alaska Fisheries  
Science Center**  
7600 Sand Point Way  
Seattle, WA 98115



### Contacts (from left):

Pat Malecha, [Pat.Malecha@noaa.gov](mailto:Pat.Malecha@noaa.gov) (ABL, Survey Coordinator)  
Kevin Siwicke, [Kevin.Siwicke@noaa.gov](mailto:Kevin.Siwicke@noaa.gov), (ABL, Survey Operations)  
Chris Lunsford, [Chris.Lunsford@noaa.gov](mailto:Chris.Lunsford@noaa.gov), (ABL, MESA Program Manager)  
Daniel Goethel, [Daniel.Goethel@noaa.gov](mailto:Daniel.Goethel@noaa.gov), (ABL, Sablefish Stock Assessment)