

2024

Longline Survey Station Schedule



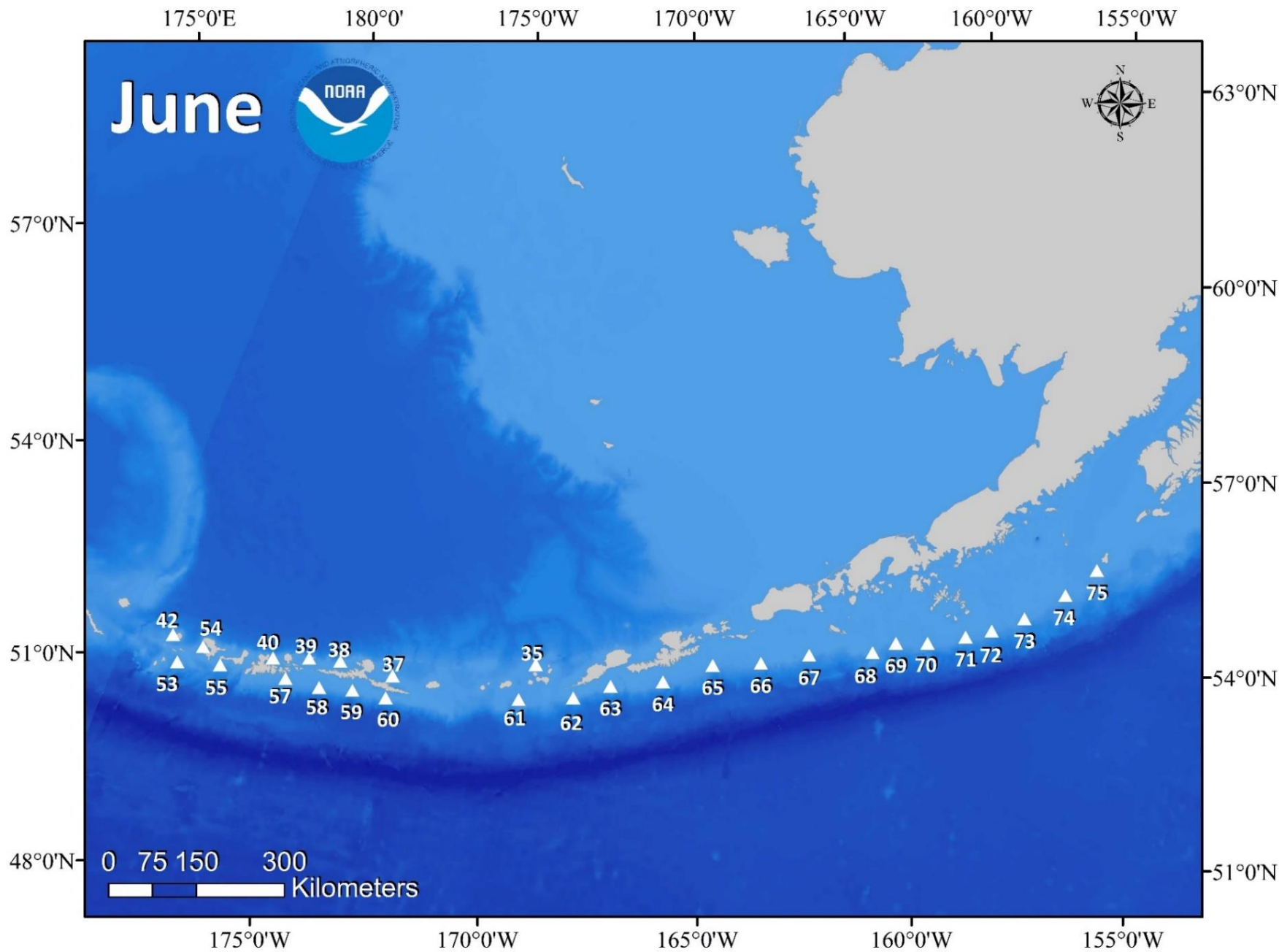
NOAA FISHERIES



Alaska Fisheries Science Center

Data collected on the AFSC Longline Survey provides an important index of abundance used in the sablefish stock assessment and is used for assessing several other groundfish stocks. To increase the accuracy of survey results, survey coordinators and stock assessment authors respectfully request that the fishing fleet avoid survey stations by staying at least 5 nautical miles from each station for 7 days before and 3 days after planned sampling dates (3 days after allows for potential survey delays). This will allow the survey vessel to sample stations unencumbered and avoid negative effects on catch rates, calculated population indices, and harvest recommendations. The planned survey schedule and station locations are listed in this calendar. The vessel for the 2024 survey is the FV Alaskan Leader. While on the grounds, the fleet is encouraged to contact the captain of the Alaskan Leader (call sign WCD 9853) on VHF channel 16 to coordinate fishing operations and minimize gear interactions. The NOAA survey coordinator, Pat Malecha, can also be contacted at: pat.malecha@noaa.gov.

June



Alaska Fisheries Science Center

Longline Survey Station Schedule

Sunday

Monday

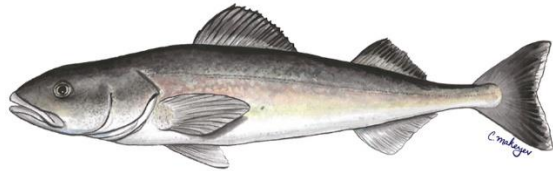
Tuesday

Wednesday

Thursday

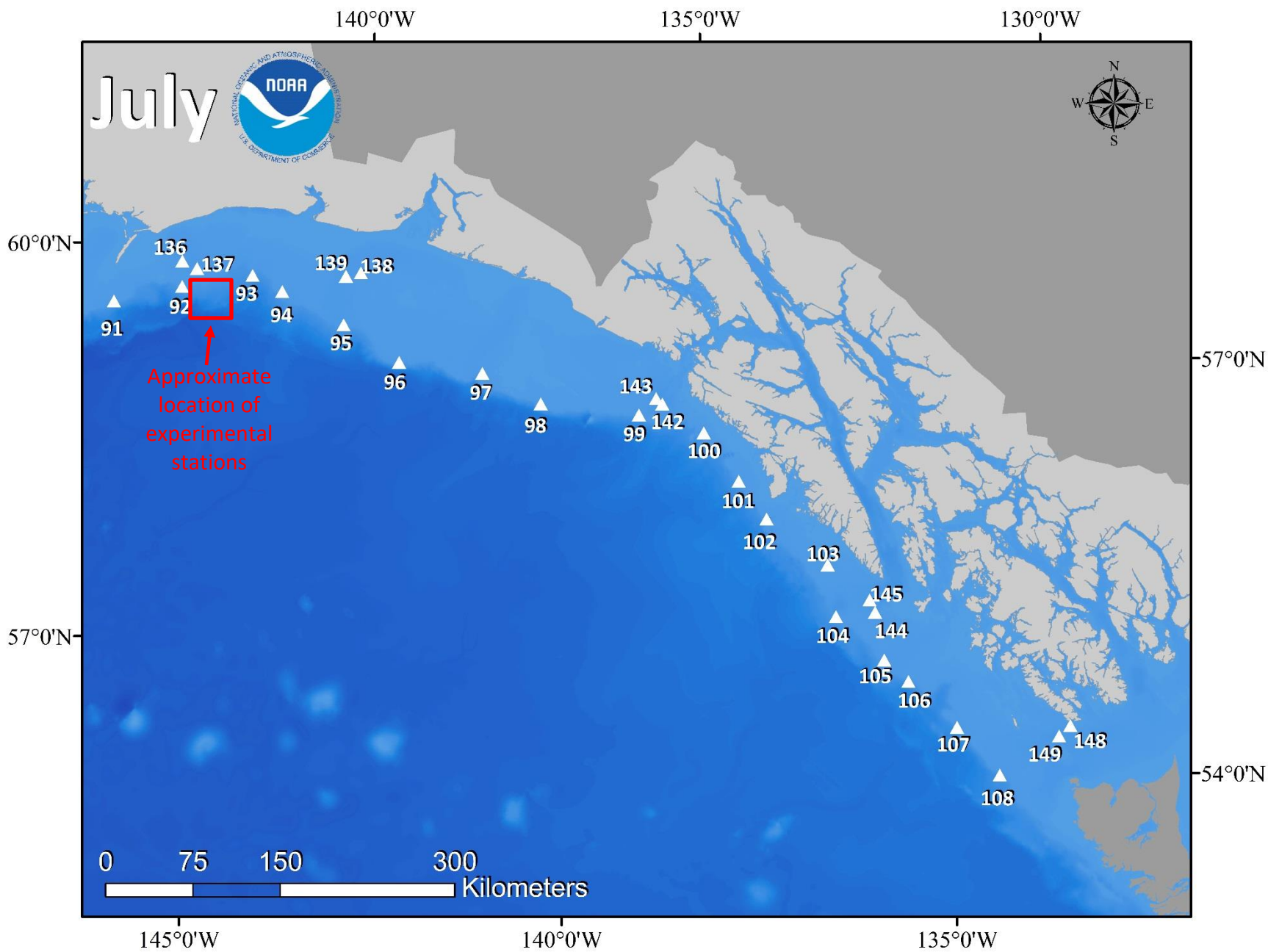
Friday

Saturday




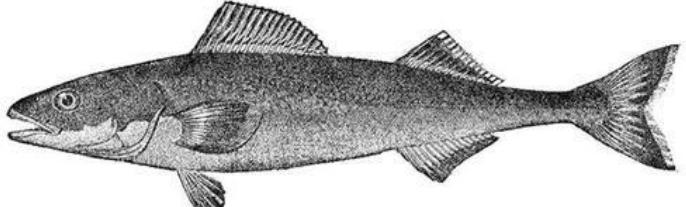
Sunday	Monday	Tuesday	Wednesday	Thursday	Friday	Saturday
						1 Station 35 53°01.8'x170°06.2' 53°03.4'x170°11.1'
2 Station 37 52°16.8'x173°29.8' 52°20.5'x173°29.7'	3 Station 38 52°15.1'x174°50.6' 52°18.4'x174°47.0'	4 Station 39 52°07.8'x175°34.3' 52°09.0'x175°41.0'	5 Station 40 51°58.2'x176°27.2' 52°01.9'x176°25.6'	6 Station 54 51°45.8'x178°09.9' 51°44.3'x178°15.9'	7 Station 42 51°46.4'x178°57.8' 51°43.1'x178°53.8'	8 Station 53 51°24.3'x178°37.6' 51°21.2'x178°33.5'
9 Station 55 51°35.5'x177°37.0' 51°32.9'x177°42.6'	10 Station 57 51°44.0'x175°59.6' 51°39.7'x176°00.1'	11 Station 58 51°46.6'x175°06.2' 51°46.5'x175°08.1'	12 Station 59 51°52.9'x174°20.3' 51°49.5'x174°24.2'	13 Station 60 51°55.2'x173°30.1' 51°52.9'x173°35.6'	14 Station 61 52°26.5'x170°18.6' 52°24.1'x170°23.8' Flag Day	15 In Port Dutch Harbor
16 Station 62 52°39.6'x169°00.2' 52°34.0'x169°10.2' Father's Day	17 Station 63 52°57.9'x168°08.1' 52°51.3'x168°12.6'	18 Station 64 53°11.5'x166°51.3' 53°03.0'x166°56.0'	19 Station 65 53°35.0'x165°41.1' 53°26.7'x165°46.8' Juneteenth	20 Station 66 53°44.2'x164°28.1' 53°37.6'x164°39.3'	21 Station 67 53°58.2'x163°15.8' 53°51.8'x163°24.1'	22 Station 68 54°08.0'x161°38.2' 54°03.5'x161°51.5'
23 Station 69 54°18.9'x161°03.6' 54°12.6'x161°13.2'	24 Station 70 54°21.9'x160°14.1' 54°13.9'x160°18.8'	25 Station 71 54°30.6'x159°15.3' 54°22.3'x159°25.9'	26 Station 72 54°38.0'x158°34.8' 54°29.5'x158°42.2'	27 Station 73 54°51.1'x157°44.2' 54°43.3'x157°51.6'	28 Station 74 55°14.4'x156°40.4' 55°06.6'x156°44.6'	29 Station 75 55°38.5'x155°50.9' 55°30.0'x155°50.0'
30 Travel to Ketchikan						



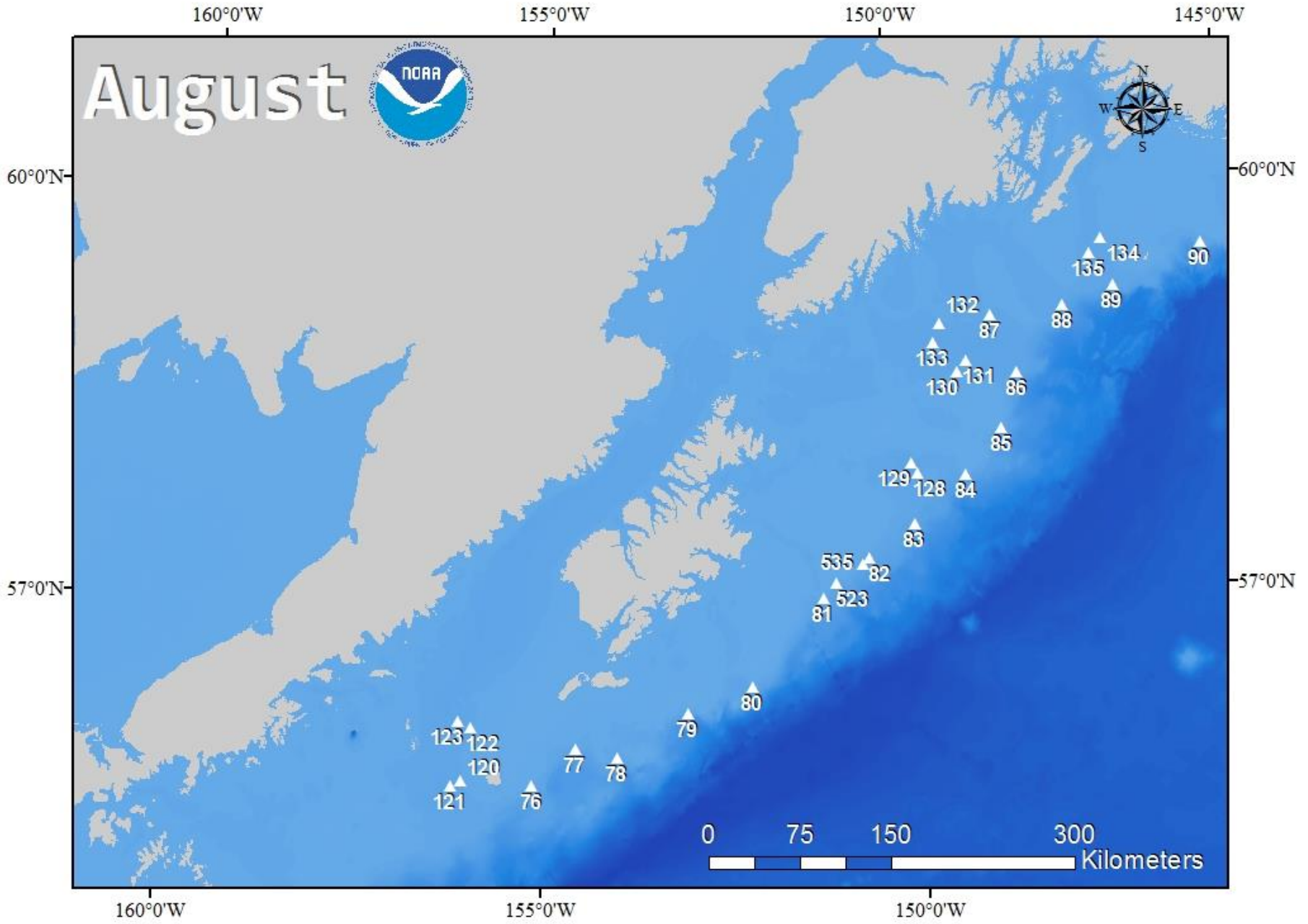


Alaska Fisheries Science Center

Longline Survey Station Schedule


Sunday	Monday	Tuesday	Wednesday	Thursday	Friday	Saturday
	1 Travel to Ketchikan	2 Travel to Ketchikan	3 Travel to Ketchikan	4 In Port Ketchikan Independence Day	5 Station 148 54°38.9'x 132°50.3' 54°36.0'x 132°56.0' Station 149 54°35.9'x 133°01.4' 54°35.8'x 133°09.4'	6 Station 108 54°27.0'x 133°55.8' 54°32.2'x 134°04.1'
7 Station 107 54°54.0'x 134°17.2' 55°00.8'x 134°27.1'	8 Station 106 55°20.8'x 134°44.1' 55°23.3'x 134°56.8'	9 Station 105 55°33.5'x 134°58.0' 55°37.5'x 135°07.8'	10 Station 144 55°55.8'x 134°54.1' 56°00.0'x 134°54.8' Station 145 56°02.0'x 134°55.6' 56°05.6'x 135°01.7'	11 Station 104 55°59.0'x 135°26.2' 56°04.8'x 135°38.0'	12 Station 103 56°23.0'x 135°20.9' 56°22.1'x 135°36.8'	13 Station 102 56°51.1'x 135°59.8' 56°57.4'x 136°06.2'
14 Station 101 57°11.3'x 136°14.1' 57°14.9'x 136°24.7'	15 Station 100 57°37.1'x 136°32.2' 57°38.5'x 136°44.1'	16 Station 142 57°54.9'x 137°00.6' 57°55.2'x 137°08.4' Station 143 57°58.0'x 137°04.6' 57°58.2'x 137°12.6'	17 Station 99 57°52.7'x 137°22.7' 57°53.4'x 137°37.4'	18 Station 98 58°08.4'x 138°43.8' 58°10.3'x 138°55.9'	19 Station 97 58°28.1'x 139°28.0' 58°24.9'x 139°42.5'	20 In Port Yakutat
21 Station 138 59°25.0'x 140°56.2' 59°25.6'x 141°04.6' Station 139 59°24.8'x 141°10.1' 59°21.5'x 141°14.9'	22 Station 96 58°41.1'x 140°38.4' 58°43.4'x 140°52.4'	23 Station 95 59°03.0'x 141°20.6' 59°02.9'x 141°38.1'	24 Station 94 59°23.3'x 142°09.8' 59°28.1'x 142°24.3'	25 Station 93 59°33.0'x 142°33.8' 59°34.8'x 142°47.4'	26 Station 92 59°33.3'x 143°39.1' 59°35.1'x 143°57.1'	27 Experimental Station 201 *58°58.9'x 141°18.0' *58°59.7'x 141°20.9' *approximate
28 Experimental Station 202 *59°33.3'x 142°59.7' *59°32.3'x 142°57.9' *approximate	29 Experimental Station 203 *59°32.6'x 143°16.3' *59°30.4'x 143°15.8' *approximate	30 Station 136 59°44.8'x 143°35.2' 59°45.7'x 143°42.3' Station 137 59°40.4'x 143°22.9' 59°43.1'x 143°29.8'	31 Station 91 59°31.3'x 144°42.7' 59°26.8'x 144°57.5'			

August



Alaska Fisheries Science Center

Longline Survey Station Schedule

Sunday	Monday	Tuesday	Wednesday	Thursday	Friday	Saturday
				Station 90 59°30.0'x 145°31.5' 59°30.2'x 145°49.7'	Station 89 59°15.8'x 146°51.1' 59°09.7'x 147°04.5'	In Port Cordova
				In Port Cordova	Station 134 59°36.9'x 146°58.0' 59°33.3'x 147°03.2' Station 135 59°30.9'x 147°09.2' 59°27.1'x 147°09.0'	Station 88 59°09.3'x 147°36.2' 58°59.6'x 147°37.8'
Station 85 58°17.6'x 148°37.0' 58°08.2'x 148°42.1'	Station 84 57°58.3'x 149°10.0' 57°50.9'x 149°20.0'	Station 128 58°00.0'x 149°50.5' 57°59.0'x 149°58.3' Station 129 58°05.0'x 149°54.5' 58°04.0'x 150°02.1'	Station 83 57°37.9'x 149°55.0' 57°28.0'x 149°59.0'	Station 82 57°24.1'x 150°34.4' 57°15.0'x 150°35.9'	In Port Kodiak	Station 535 57°21.6'x 150°39.8' 57°12.6'x 150°39.7'
Station 523 57°13.5'x 151°01.9' 57°03.4'x 151°02.4'	Station 81 57°07.1'x 151°13.3' 56°58.2'x 151°17.6'	Station 80 56°29.1'x 152°12.8' 56°21.1'x 152°21.0'	Station 79 56°18.2'x 153°04.6' 56°13.3'x 153°16.4'	Station 78 55°58.4'x 154°01.3' 55°49.9'x 154°01.9'	Station 77 56°02.5'x 154°34.0' 55°53.6'x 154°34.5'	Station 76 55°46.0'x 155°08.3' 55°37.9'x 155°15.7'
Station 122 56°11.2'x 155°57.8' 56°11.0'x 156°04.6' Station 123 56°13.9'x 156°07.8' 56°15.2'x 156°14.6'	Station 120 55°47.3'x 156°04.6' 55°45.8'x 156°11.9' Station 121 55°45.0'x 156°12.1' 55°43.8'x 156°20.0'	Travel to Dutch Harbor	Unload Vessel Dutch Harbor			