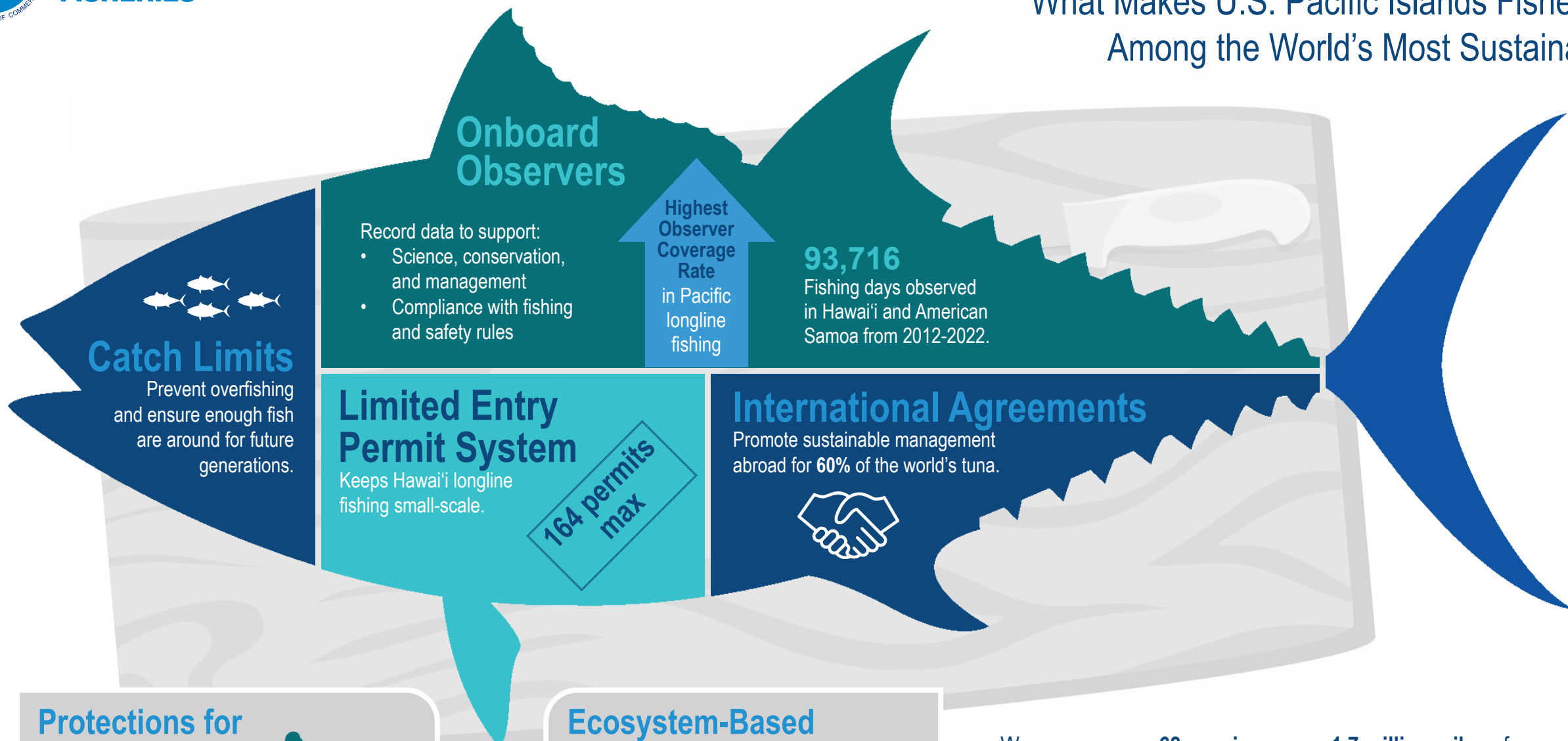


**NOAA
FISHERIES**

A Cut Above

What Makes U.S. Pacific Islands Fisheries
Among the World's Most Sustainable



Catch Limits

Prevent overfishing and ensure enough fish are around for future generations.



Onboard Observers

- Record data to support:
- Science, conservation, and management
 - Compliance with fishing and safety rules

Highest Observer Coverage Rate in Pacific longline fishing

93,716

Fishing days observed in Hawai'i and American Samoa from 2012-2022.

Limited Entry Permit System

Keeps Hawai'i longline fishing small-scale.

164 permits max

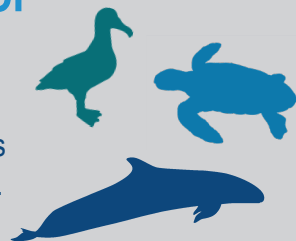
International Agreements

Promote sustainable management abroad for 60% of the world's tuna.



Protections for Marine Life

Ensure that threatened and endangered species populations can recover.



Ecosystem-Based Approach

Uses science to understand and manage entire ocean ecosystems versus individual species.



We manage over **68 species** across **1.7 million miles** of ocean throughout the U.S. Exclusive Economic Zone in the Pacific.

Find local and sustainable seafood options to put on your plate

www.fishwatch.gov/profiles/pacific-islands-profiles

