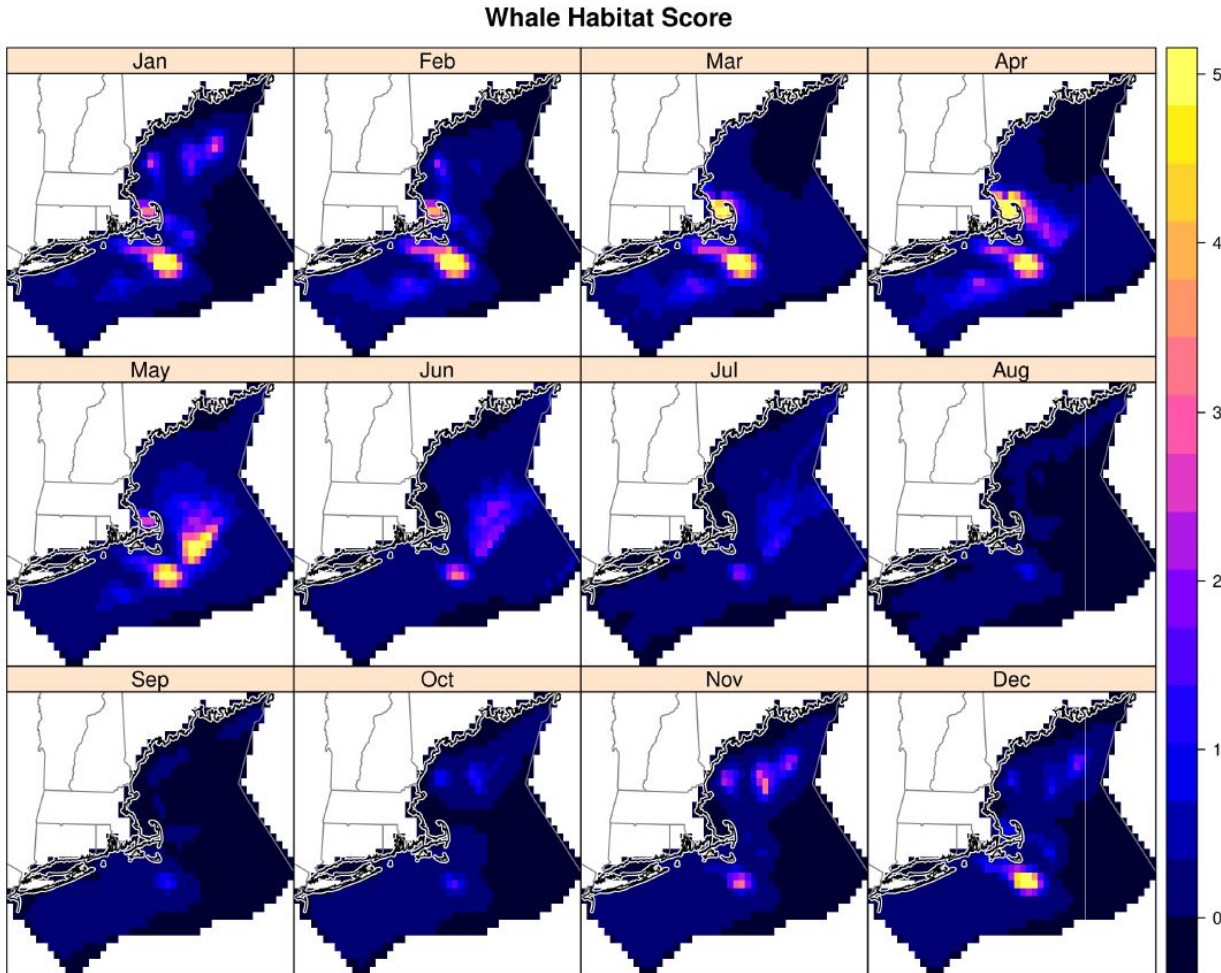


# Whale Habitat Density (GoM & SNE)

January	292
February	290
March	310
April	368
May	353
June	163
July	117
August	15
September	17
October	47
November	120
December	163

Highest abundance in GoM and SNE Oct - Jul.



# Other Trap/Pot (GoM & SNE)

## Total Vertical Lines:

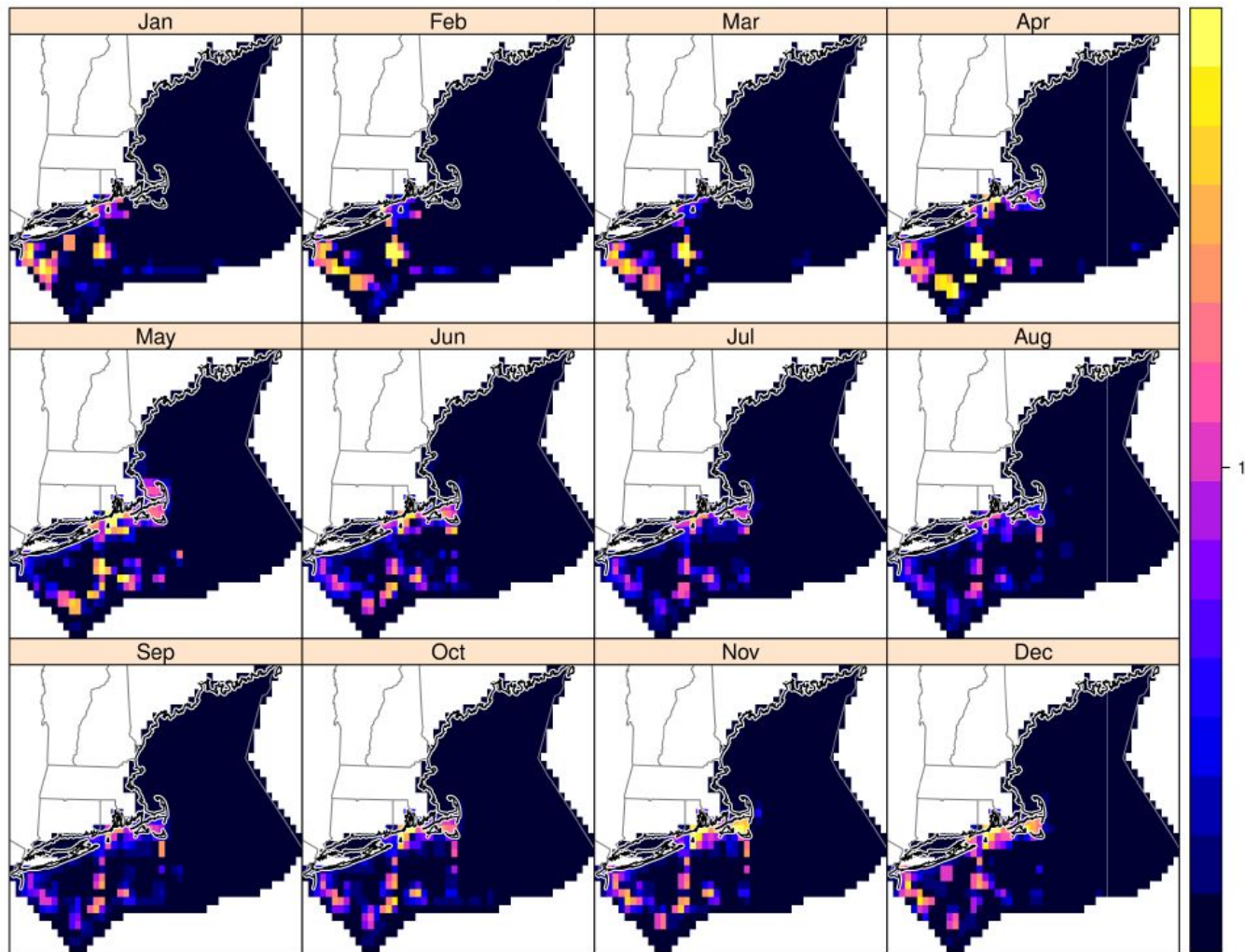
40.3% of Phase 2 Fisheries

5.1% of Coastwide Fisheries after Phase 1

## Mean Risk:

23.8% of Phase 2 Fisheries

5.4% of Coastwide Fisheries after Phase 1



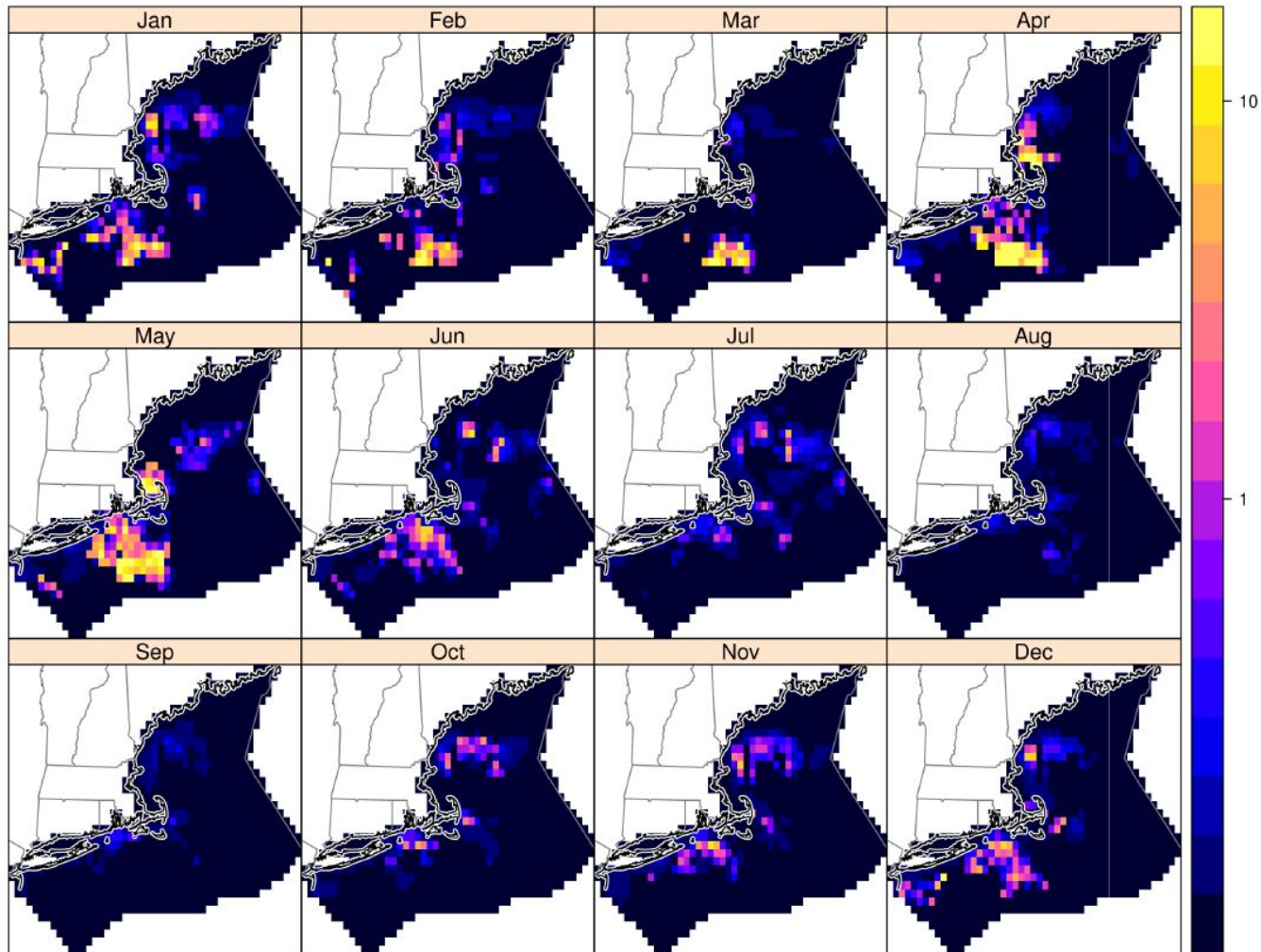
This map shows risk (co-occurrence+gear strength)

\* Low resolution for data confidentiality; log-scaled for visibility

# Gillnet: Vertical Line Risk (GOM & SNE)

**Total Vertical Lines:**  
 6.5% of Phase 2 Fisheries  
 0.8% of Coastwide Fisheries after Phase 1

**Mean Risk:**  
 40.7% of Phase 2 Fisheries  
 9.2% of Coastwide Fisheries after Phase 1



This map shows risk (co-occurrence+gear strength)

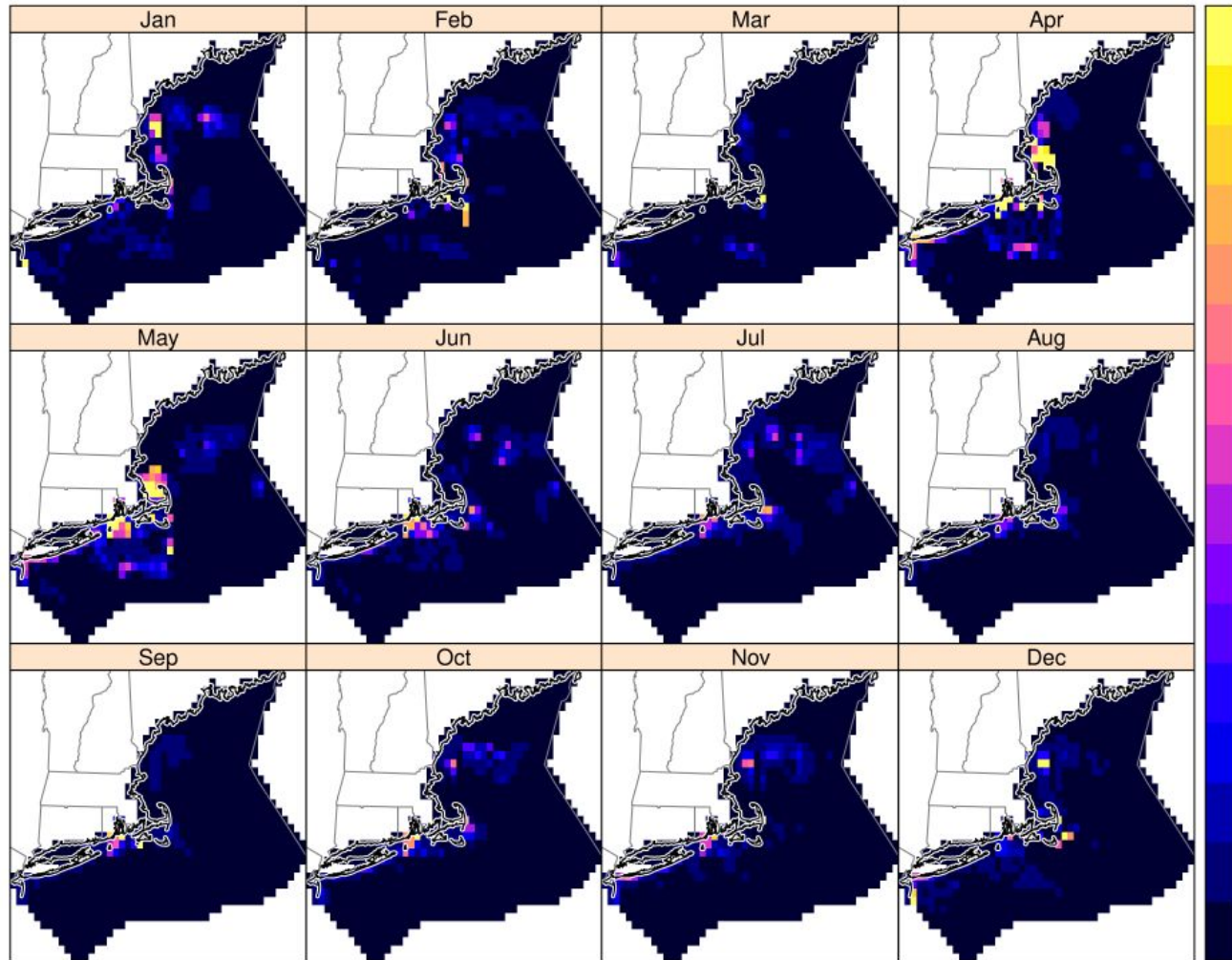


# Gillnet: Panel Risk (GOM & SNE)

## Mean Risk:

2.1% of Phase 2 Fisheries

0.5% of Coastwide Fisheries after Phase 1



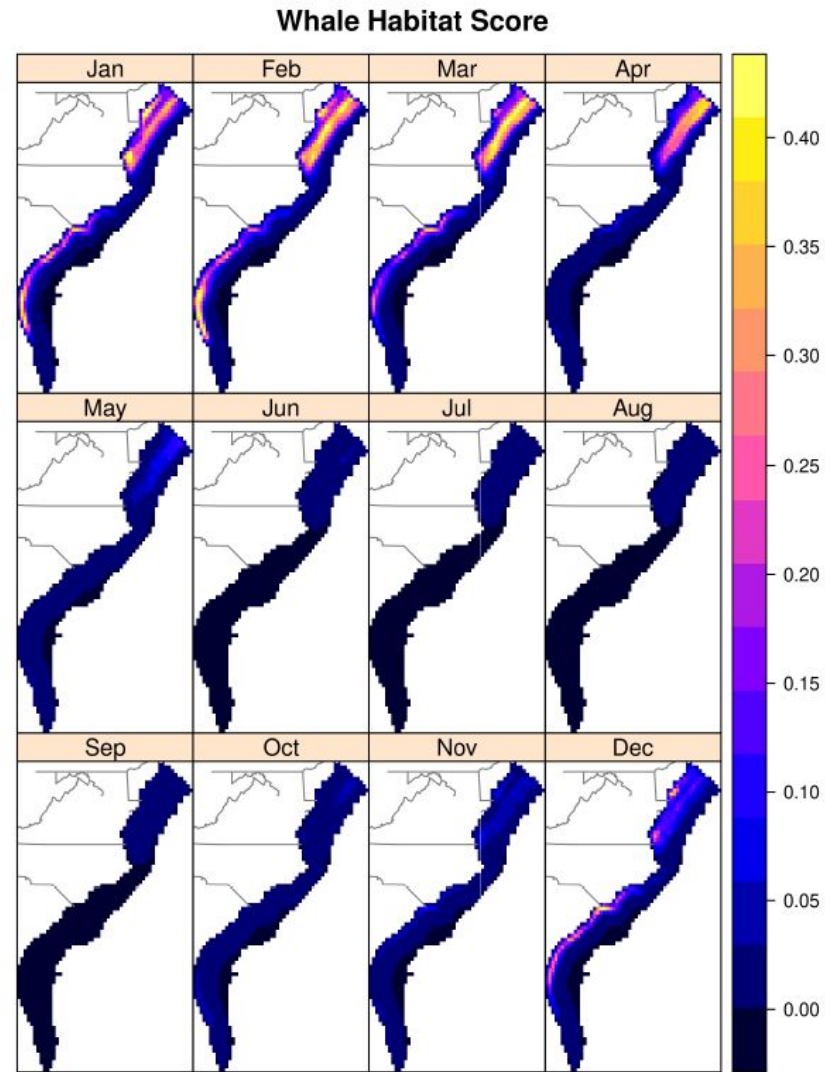
This map shows risk (co-occurrence+gear strength)

\* Low resolution for data confidentiality; log-scaled for visibility

# Whale Habitat Density (MAB & SE)

Number of whales within the region at any given time. Highest abundance in MAB and SE is Oct - May, corresponding to the time calving in the SE and migrating through the MAB.

January	65
February	78
March	66
April	40
May	12
June	3
July	1
August	1
September	2
October	8
November	13
December	41



# Other Trap Pot (Mid-Atlantic & SE)

## Total Vertical Lines:

51.8% of Phase 2 Fisheries

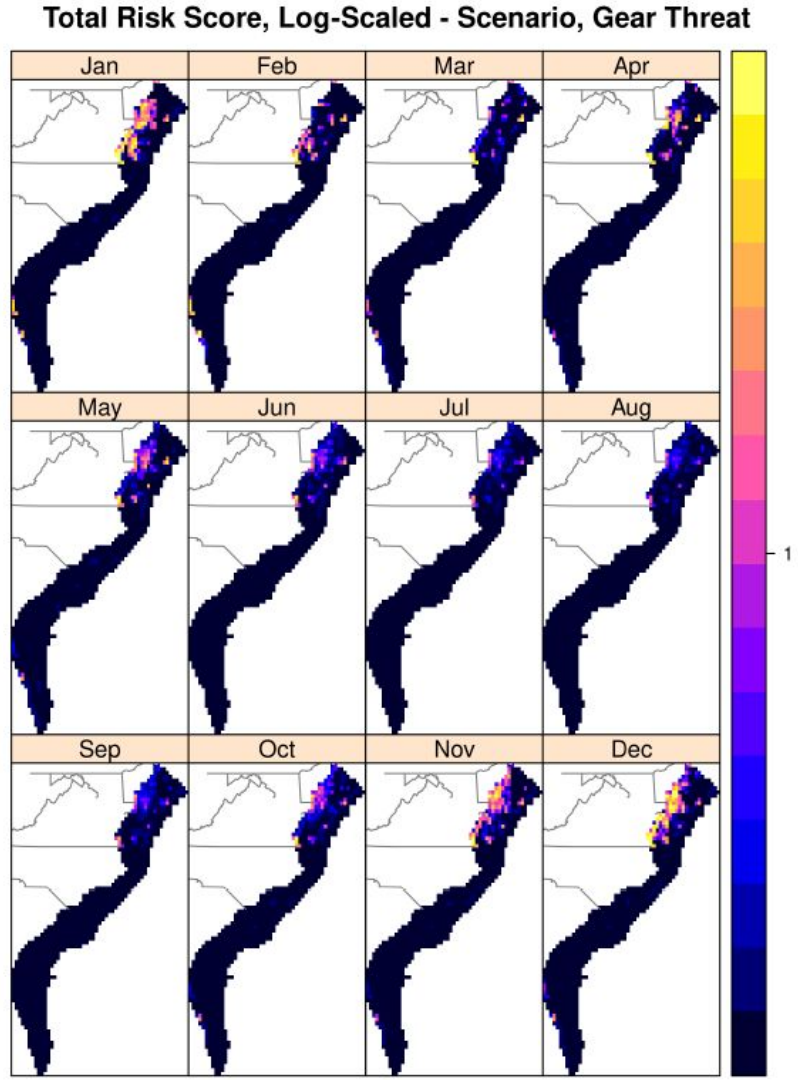
6.6% of Coastwide Fisheries after Phase 1

## Mean Risk:

24.8% of Phase 2 Fisheries

5.6% of Coastwide Fisheries after Phase 1

This map shows risk  
(co-occurrence+gear strength)



# Gillnet: Vertical Line Risk (Mid-Atlantic & SE)

## Total Vertical Lines:

1.4% of Phase 2 Fisheries

0.2% of Coastwide Fisheries after Phase 1

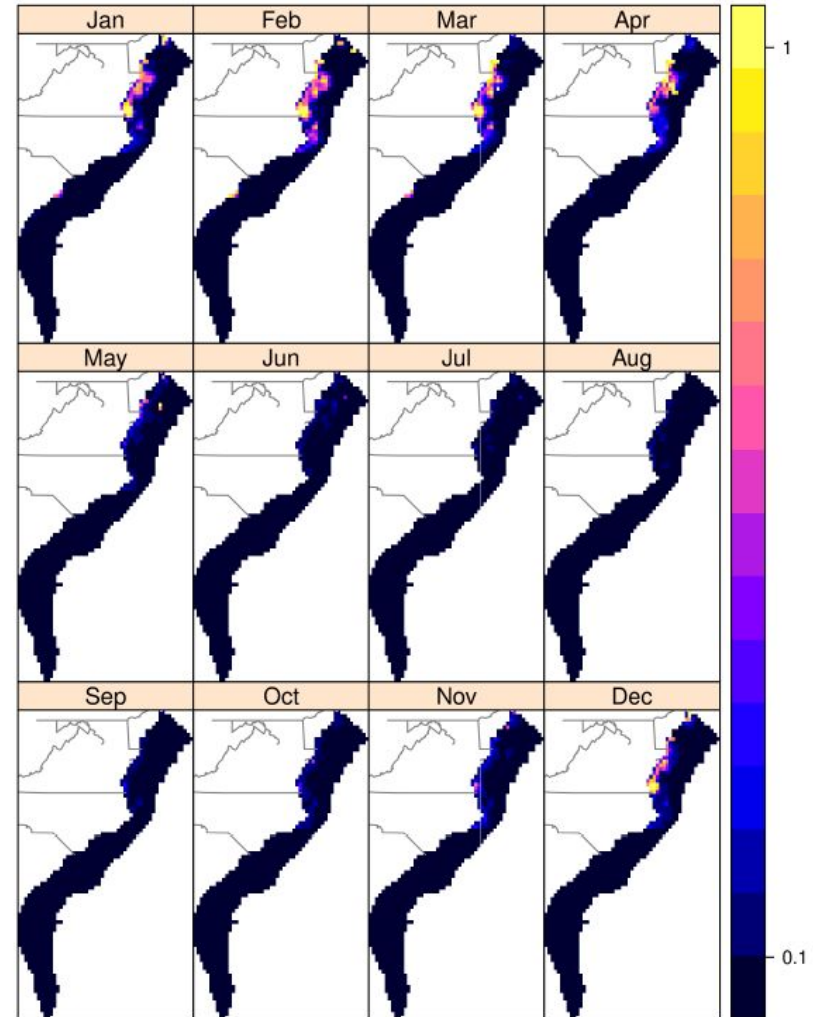
## Mean Risk:

2.8% of Phase 2 Fisheries

0.6% of Coastwide Fisheries after Phase 1

This map shows risk (co-occurrence+gear strength)

Total Risk Score, Log-Scaled - Scenario, Gear Threat



# Gillnet: Panel Risk (MAB & SE)

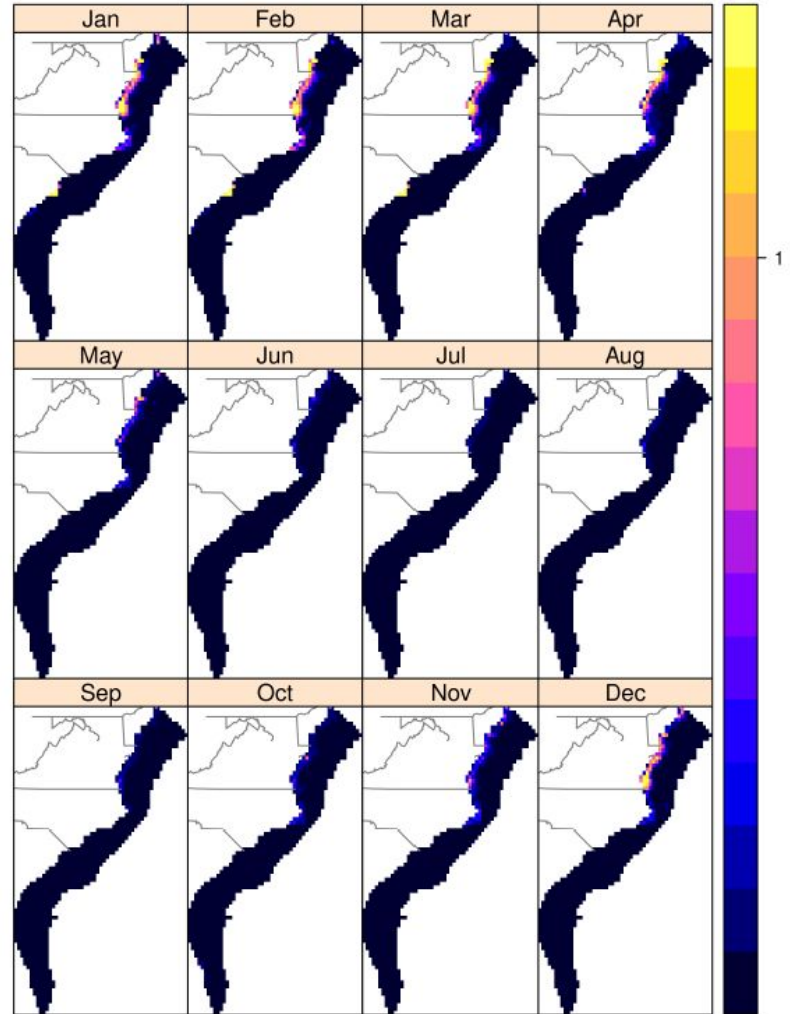
## Mean Risk:

5.8% of Phase 2 Fisheries

1.3% of Coastwide Fisheries after Phase 1

This map shows risk (co-occurrence+gear strength)

Total Horizontal Line Risk Score, Log-Scaled - Default





# Summary

Data compiled as of 9May2022 - all values subject to change

## VERTICAL LINES

Fishery	Region	# of lines	Percent of Phase 2 fisheries	Percent of all remaining fisheries**
OTP	GOM/SNE	51,000	40.3%	5.1%
	MAB/SE	65,602	51.8%	6.6%
Gillnet	GOM/SNE	8,192	6.5%	0.8%
	MAB/SE	1,773	1.4%	0.2%

## RISK UNITS\*

Fishery	Region	# of risk units	Percent of Phase 2 fisheries	Percent of all remaining fisheries**
OTP	GOM/SNE	2,004	23.8%	5.4%
	MAB/SE	2,092	24.8%	5.6%
Gillnet	GOM/SNE	3,606	42.8%	9.6%
	MAB/SE	719	8.5%	1.9%

\* Including gillnet panels

\*\* After Phase 1